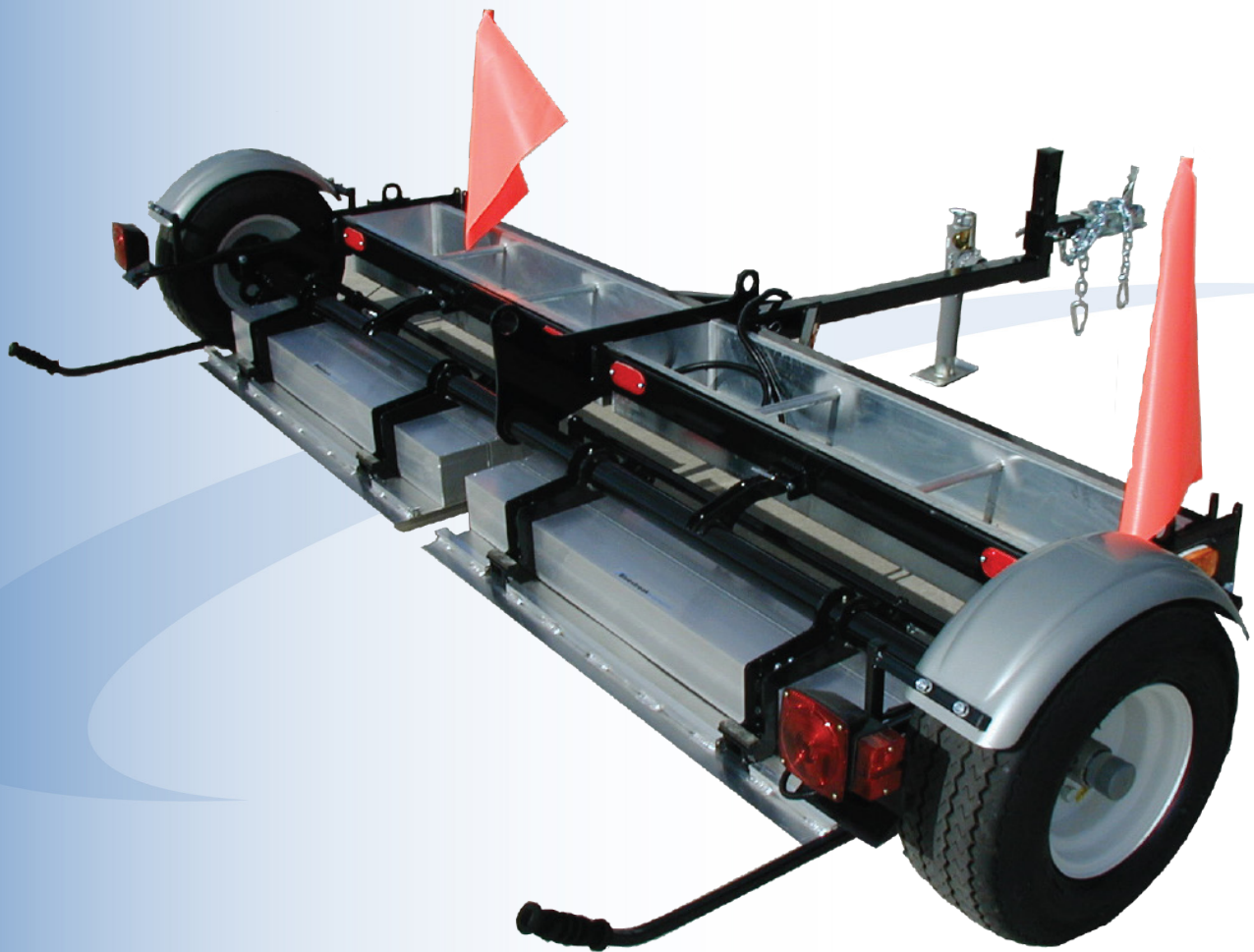


Operating Instructions

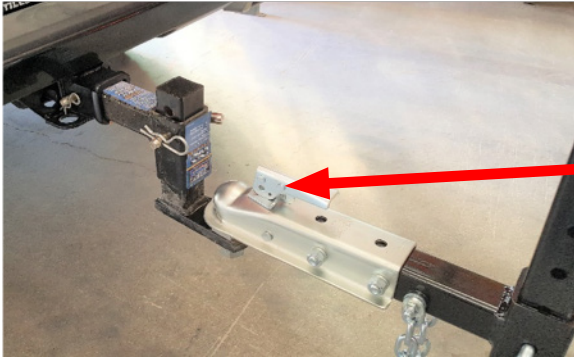
Piranha



 **Bluestreak**equipment
The world's best magnetic cleaning equipment

Bluestreak Equipment
1645 Hwy #3, Delhi
Ontario, Canada
N4B2W6

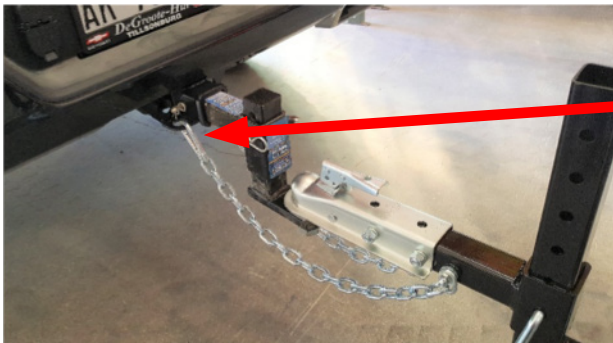
Step 1. Connect Sweeper To Ball



Connect the Piranha magnetic sweeper to the tow vehicle with the 2" ball coupler.

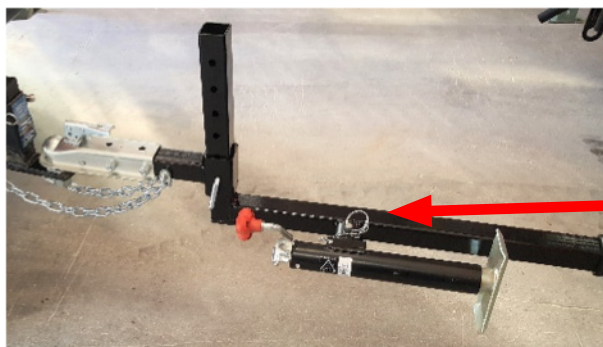
You must use a 2" Trailer ball, unless you purchased an optional Pintle Ring.

Step 2. Attach Safety Chains



Attach both Safety Chains to the tow vehicle.

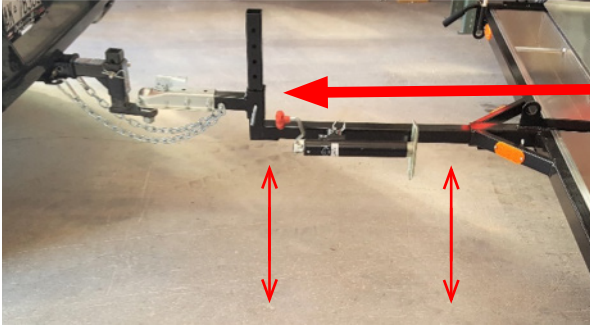
Step 3. Remove Jack Stand Support



Raise the Jack stand by cranking the handle until the trailer is supported by the vehicle and then move the Jack stand into a horizontal position by removing and re-installing the Ball Spring Pin.

Piranha 

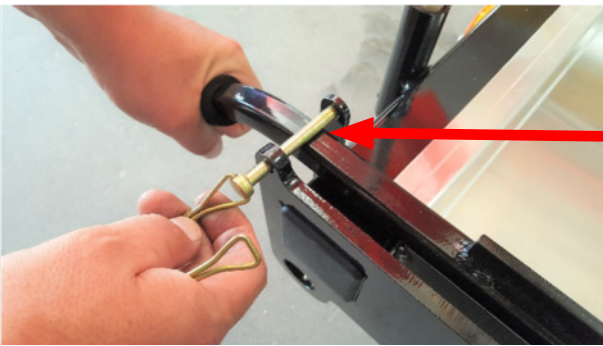
Step 4. Level Magnetic Sweeper



Make sure the tongue is level (parallel) with the ground.

It can be adjusted by changing the position of the coupler on the trailer tongue or the ball mount on the tow vehicle (if applicable).

Step 5. Prepare To Lower The Magnet



Prepare to lower magnet into the sweeping position by removing the spring clip holding the handle in place.

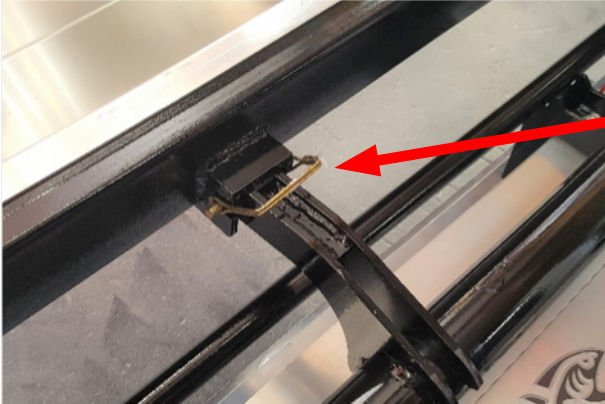
Step 6. Lower The Magnet

Pull up on the handle and flip the magnet over into the sweeping position as shown.



Piranha 

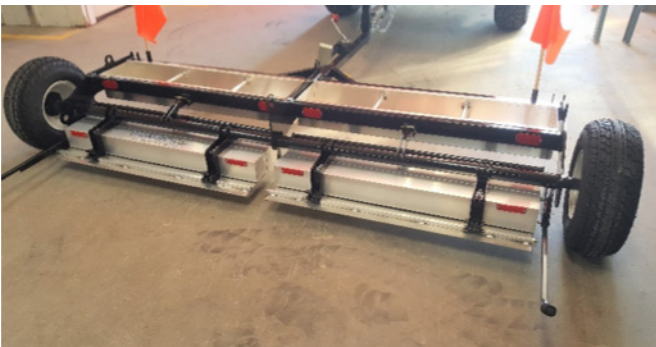
Step 7. Secure Magnet In Sweeping Position



Secure the magnet in the sweeping position by inserting the spring clip (removed in Step #5) into the slot as shown.

Repeat Steps 5 , 6 and 7 for the opposite side.

Step 8. Start Sweeping



You are now ready to use the Piranha Magnetic Sweeper to pickup Metal Debris.

Tow the Magnetic Sweeper around the area to be swept.

Note: The Maximum recommended sweeping speed is 15mph (24km/h)

Step 9. Prepare To Flip Magnet Up



Once metal debris has been collected, remove the spring clip that secures the magnet in the sweeping position.

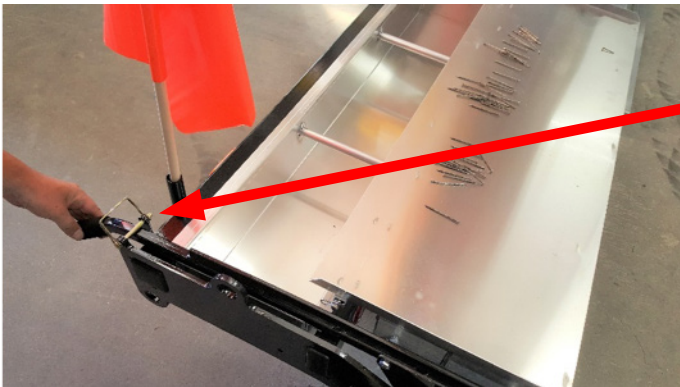
Piranha 

Step 10. Flip Magnet Up



Pull up on the handle and flip the magnet over into the clean off position.

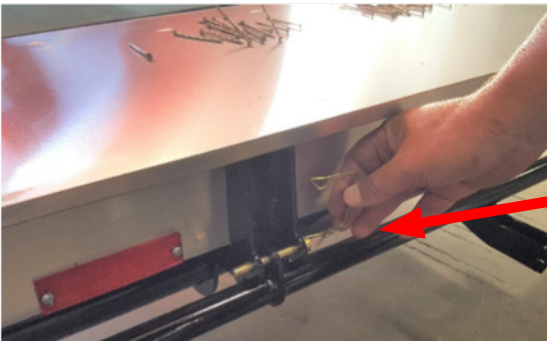
Step 11. Secure Magnet In Clean Off Position



Insert the Spring Clip back in this location to hold the magnet in position.

Repeat Steps 9 , 10 and 11 on the opposite side of sweeper.

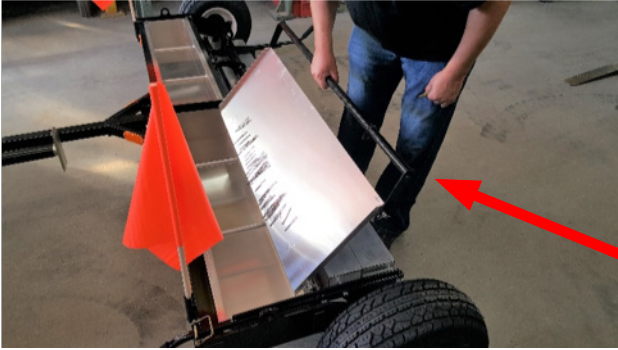
Step 12. Prepare For Debris Removal



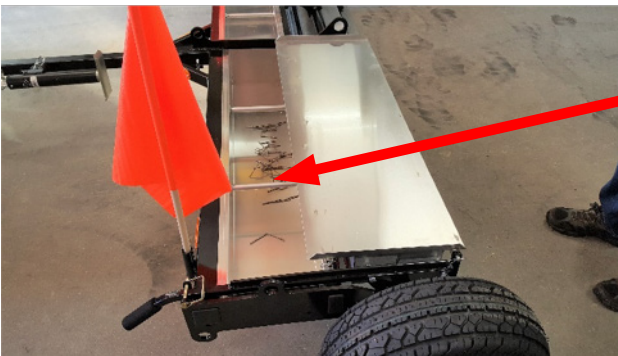
Remove the spring clip from the Debris Tray Arm as shown.

Piranha 

Step 13. Remove Debris



Pull up on the black round handled Debris Tray Arm and wipe all metal off of the debris tray into the Piranha Debris Bin.



Step 14. Re-Secure Debris Tray Arm

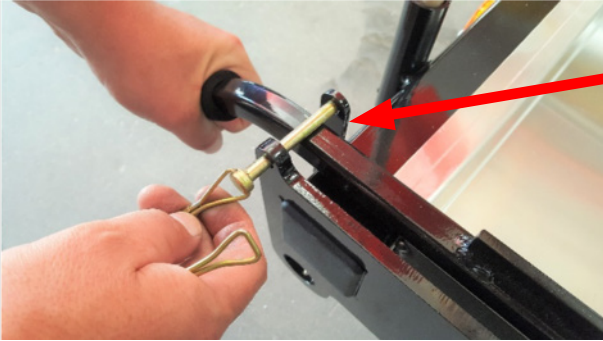


Lower the debris tray arm back into place and insert the spring clip to secure it in place.

Repeat Steps 12 , 13 and 14 on the Opposite Side.

Piranha 

Step 15. Prepare To Lower Magnet Again



Prepare to lower the magnet back into sweeping position in order to continue sweeping by removing the spring clip securing the handle.

Step 16. Lower The Magnet To Sweeping Position

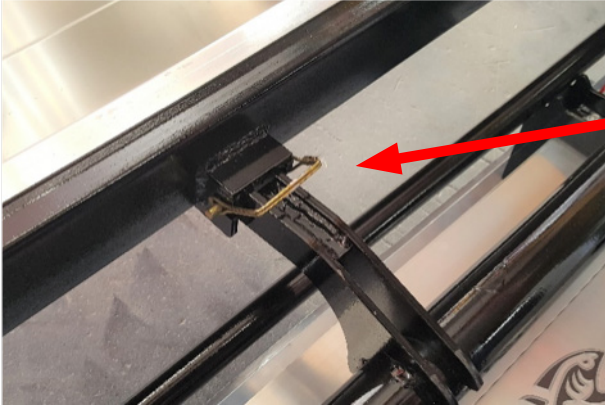


Pull up on the handle to flip the magnet over into sweeping position.



Piranha 

Step 17. Secure Magnet In Sweeping Position



Secure the magnet in the sweeping position by inserting the spring clip (removed in Step 15) into the slot as shown.

Repeat Steps 15 , 16 and 17 for the opposite side.

Step 18. Dispose of Debris



Dispose of the debris by removing the debris bins and dumping them into a metal recycling bin.

Step 19. Re-Install Debris Bins



Re-install the Debris Bins.

You are now ready to continue sweeping again.

Piranha 

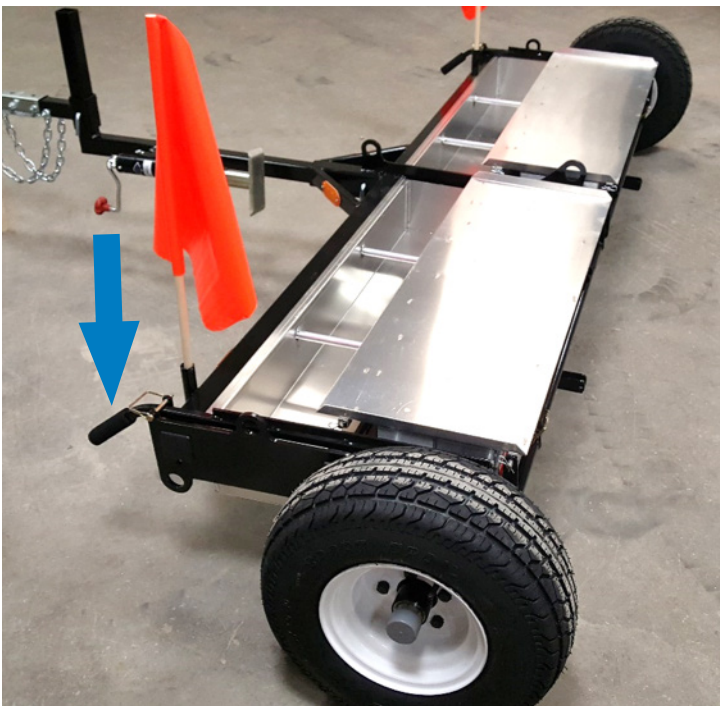
Additional Information

The Piranha Magnetic Sweeper has two positions



1) Sweeping position.

This position is used when sweeping for metal debris at speeds up to 15mph (24km/h)



2) Clean Off / Transport Position.

This position is used for cleaning metal debris off of the magnetic sweeper and for transporting the magnetic sweeper when not in use.

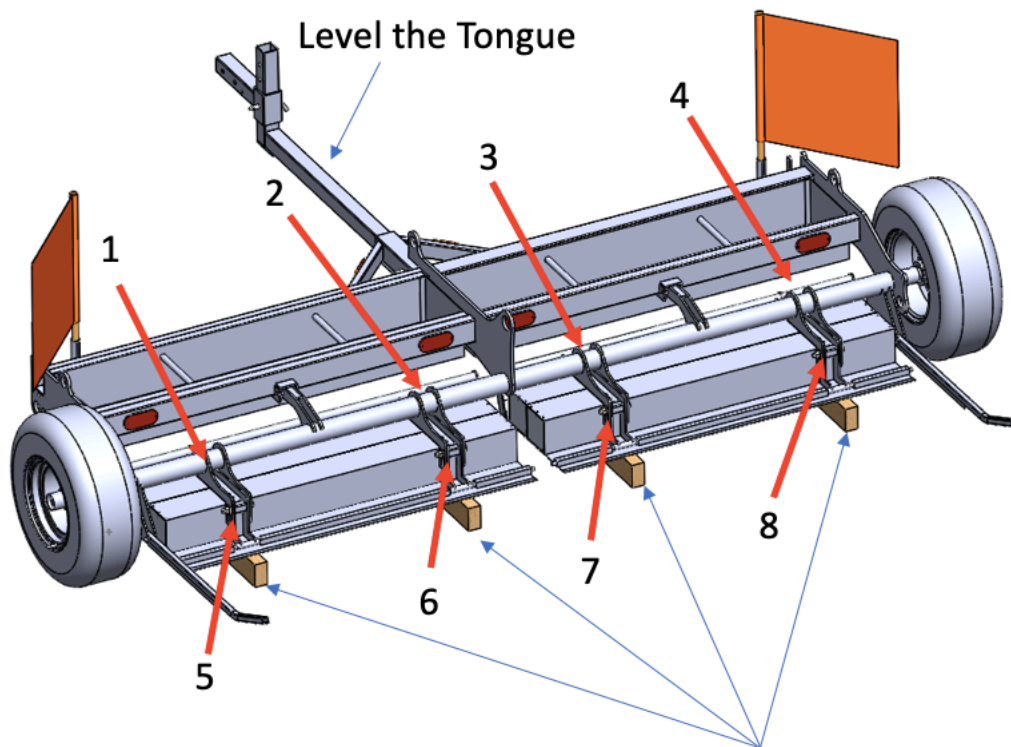
With the magnets in the upright position the Piranha has more ground clearance (6.5") and the Debris Bins are locked

in position for road and highway speeds over 15mph (24km/h)

Piranha 

Sweeping Height Adjustment

The Piranha Magnetic Sweeper has an Adjustable Sweeping Height (Ground Clearance) of 2" to 3" (50mm to 75mm)



**4pcs of 16" long Blocking (non-magnetic)
placed under the cradles.**

To adjust the sweeping height;

1. Set the sweeper on a flat surface with blocking underneath that is the same height as the sweeping height desired. Place the blocking directly under each cradle as shown above. (Note: you may have to lift the sweeper onto the blocking if you are increasing the sweeping height).
2. Loosen the $\frac{1}{2}$ " bolts in locations 1 to 8 above with $2 \times \frac{3}{4}$ " wrenches
3. With the magnets now resting on the blocking, the Tongue Level and with the wheels touching the ground tighten bolts with a torque wrench to 55 ft/lbs (74 Nm) at locations 1 to 8.
4. The sweeper can now be lifted off of the blocking and put into service.

Piranha 

Bluestreak Equipment • 1645 Hwy #3 • Delhi • Ontario • Canada • N4B2W6
www.blustreakequipment.com